

Historic, archived document

Do not assume content reflects current scientific knowledge, policies, or practices.

68.71

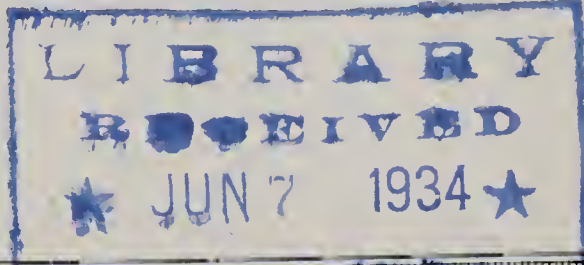


SPECIAL
Abbreviated
LIST of

Choice and Unusual Plants ~ for Fall and Winter Planting

- A truly fine garden is poetic inspiration;
- The place to rest weary minds;
- A spot to recover mental poise;
- The Creator's workshop for beauty, and Man's mirror for wisdom in understanding Nature's glory;
- A tribute of pride for the keenest thinkers;
- A puzzle for wizards that never grows old;
- A worthy goal for all mankind, rich and poor alike, as Nature makes no distinction, for all may live in or near a garden and behold beauty unadulterated.

—J. G. BACHER



FROM
Swiss Floral Co.
 1920 N. E. SEVENTH AVENUE
 PORTLAND, OREGON
 PHONE TRINITY 9865

To Our Patrons:

WE PRESENT here a limited selection of plants grown by us especially for folks who appreciate beautiful and novel things for the garden at prices in keeping with the times. We have plants of all kinds as in the past, but have listed here only some of the extra choice items and the very fine, special things that a good garden should have.

We feel that the extra pride and satisfaction secured by planting a super-selection of flowers makes a garden far more worth while and appealing than to plant just ordinary flowers, and today's prices are so reasonable that it is possible for every garden lover to choose some of the better items as listed here.

We have specialized in the growing and raising of rare and choice plant forms for over twenty-five years, and the best is invariably to be found at the Swiss Floral Company, where quality has been dominant at all times. Our advice to you is to plant less, but to plant better things, and to choose wisely from the best source of supply, for in that lies satisfaction, happiness, and pride in accomplishment.

Please note that price quotations in this list apply to orders for fall and early winter delivery only. Many items are available in limited quantity only, so that it becomes advisable and prudent to place orders early, so that stock may be reserved for delivery later on. All orders with remittance in full, including postage, will be supplied with extra items as a special discount.

Swiss Floral Company
PORTLAND, OREGON

Hardy Shrubs

ARALIA SIEBOLDII—A shrub with large, leathery, evergreen foliage resembling fig leaves. It makes a very stately bush of tropical appearance for lawn specimens or in the shrubbery border. They are entirely hardy on the Pacific Coast, but not east of the Cascade Mountains. They make fine potted shrubs for indoors everywhere, however. 50c each.



AZALEA HINODEGIRI

AZALEA HINODEGIRI—Crimson, evergreen, extremely dwarf, flowering in spring, producing a mass of color entirely covering the foliage. Splendid for rock gardens or as small border shrubs. We grow these in large quantities in many sizes ranging from 35c to \$2.50 each for exceptionally fine specimens. They are colorful, neat, and permanent shrubs, lasting for generations without over-growing a yard like so many other plants do.

AZALEA LEDIFOLIA ALBA—A marvelous companion to Hinodegiri, growing a bit larger in leaf and shape, and covered with large snow-white blossoms during the spring. Splendid in contrast with the crimson Hinodegiri. 75c to \$2.00 each.

AZALEA KURUME YAYEGIRI—This is an orange or flame red flowering, evergreen variety of a most striking color and beauty with a dwarf habit of growth, rarely exceeding two feet in height. Ideal for combining with purple or lavender rock plants or by itself in the shrubbery border. Strong four-year old bushes \$1.00 each.

AZALEA KURUME LAVENDER QUEEN—Slightly stronger growing than the preceding, with large lavender blossoms of a very pleasing, clear color. Only small size plants of this novelty are available at 35c each.

AZALEA KURUME MACROSTEMA—Very strong growing, dwarf, evergreen, blooming late in the season (June) with large, deepest salmon-pink colored flowers. A real jewel among evergreen shrubs for Coast gardens. Strong specimens 75c each; larger sizes to \$2.00.

CHOICE AND UNUSUAL PLANTS FOR FALL AND WINTER PLANTING

AZALEA KURUME PINK PEARL—A lovely light pink with semi-double flowers and light green foliage, greatly admired. Priced from 50c to \$2.50 each according to size.

These rather new Kurme Azaleas have proven hardy for us this past winter without shelter of any kind and we have over fifty different sorts with which to delight garden owners in the future in the Coast Regions. We do not recommend them for use east of the Cascade Range. They will prove to be the most desirable and interesting dwarf evergreens known so far, and will be the pride of garden fanciers for generations to come.

AZALEA MOLLIS—The orange and yellow flowering shrubs so often seen in bloom in gardens during the spring. They are deciduous but very colorful and hardy, combining well with Rhododendrons, as they have similar habits of growth and soil requirements. Nice flowering sizes from 75c up. Small stock 35c to 75c.



JAPANESE CAMELLIAS

CAMELLIAS—As evergreen garden shrubs and trees are a specialty in the climate of the Pacific Coast, where they thrive freely and provide their luxurious waxy flowers in great abundance. Although a slow-growing shrub to start, they reach a fair size, nevertheless, and increase in beauty year after year. Our young stock is all pot-grown, and can, therefore, be planted out at any time with entire safety, or they may be brought into bloom indoors before setting them out in spring. We have fine, two-year old stock in red, white, pink, and variegated sorts at 50c and 75c each; also three-year olds, many with buds on ready to bloom, \$1.00, to \$1.25 each, according to perfection of bushes. They thrive best in ordinary rich soil where they are sheltered from the afternoon sun. Never has finer stock of this choice shrub been offered, than the lot now ready for planting. Six are sold for the price of five for those who can use a collection. A group of them will be the pride of your garden for a life-time.

CEANOTHUS, OR BLUE MOUNTAIN LILAC—A very profuse flowering shrub for sunny situations that produces loose, graceful sprays of light blue flowers all during the summer months into late fall. It is easily grown and very showy with its masses of blue sprays, and

one of the outstanding flowering shrubs for all gardens of the Coast Region. Sure to bloom from the first season on. Good sized bushes now only \$1.00 each; 3 for \$2.50.

POMEGRANATE—The double flowering, scarlet form of this upright growing deciduous shrub is a source of admiration all during the summer months because of its waxy, brilliant, orange-scarlet flowers and shiny bright green foliage. It enjoys or needs the sunniest, hottest spot in the garden and gets along without any watering after the first year, when the roots have become established. Strong bushes that need no shelter of any kind and will flower the first season can be supplied now at \$1.50 each. Larger sizes up to \$3.50 each. Their hardiness has been proven here after over twenty years of experience in the vicinity of Portland.



PERNETTYA MUCRONATA

PERNETTYA MUCRONATA, or **SOUTH AMERICAN HUCKLEBERRY**—The foliage of this shrub is almost heather-like, but somewhat larger and the flowers are white like Ericas and produced in great quantity during the spring. Fruit nearly the size of snowberries forms in masses, covering the whole bush and remaining on all winter, giving an extremely cheery effect, for these berries come in scarlet, pink, white or maroon red color. Some are edible and prove life-savers to birds during spells of snowy weather. The hardiness of Pernettya adapts it to the Pacific Coast only, and it calls for acid soils and resents extreme dryness at the roots. For supreme beauty and charm for garden planting no other shrub can compare with the Pernettya, be it for larger rock gardens or as a border shrub in front of taller growing kinds. 50c to \$1.50 each; larger sizes, \$1.50 to \$3.00.

PYRACANTHA CRENULATA—This is one of the late introductions from Yunnan in China, where this evergreen upright growing shrub comes from. It is particularly suited to grow on walls in hot dry situations, and because its berries are bright yellow instead of red as most Firethorns, it will prove a delightful novelty. Not hardy east of the Cascade Range but very handsome for Coast gardens. Priced from \$1.50 to \$3.00 for strong vigorous stock.

PYRACANTHA KANSUENSIS—Perhaps the most gorgeous, new, berried shrub for sunny, dry locations so far known. It bears masses of bead-like coral-red berries during fall and winter. This entirely new shrub is now available in pot-grown plants at 50c each.

Rhododendrons



RHODODENDRONS

RHODODENDRONS, the garden's greatest evergreens are grown by us in large selections, in rich assortments of colors, grafted and seedling forms. Grafted kinds are of uniform colors, ranging from white to pink to deep reds, lavender to purple. Prices of strong specimens, flowering size, range from \$2.00 up. Seedling plants with buds to flower are available anywhere from 75c to \$2.50 each. The following are some of our most popular grafted kinds:

RHODODENDRON ROSAMUNDI—The very earliest of all to bloom with flowers of a blush pink color. Frequently seen in blossom in early March already locally. Flowering sizes priced from \$1.50 to \$2.50 each.

RHODODENDRON SCIPIO—A mid-season flowering sort of bright red with darker spots. Much admired. Good bushes from \$2.00 to \$3.00 each.

RHODODENDRON PINK PEARL—Very large flowering, light pink, with immense clusters. Fine stock from \$1.50 to \$2.50 each; larger sizes also.

RHODODENDRON PRINCESS ALICE—Also large flowering, deeper pink sort of great beauty. Available at \$1.50 to \$3.00 each.

RHODODENDRON GIGANTEUM—Bright rose, large clusters. \$2.00 to \$3.00 each.

RHODODENDRON PRINCESS JULIANA — Large flowering like Pink Pearl, but fringed wavy petals with heavy dark pink edge to lighter pink center. Buds almost red when opening. \$2.00 to \$3.50 each.

RHODODENDRON MRS. JOHN WATERER—Rosy crimson, very showy intense color. \$2.50 to \$3.50 each.

RHODODENDRON ROSE ELEGANS—Pleasing, soft rose shade. Very free growing habit and extra good foliage effect. One of the best for average planting purposes. \$2.00 to \$3.00 each for nice specimens.

RHODODENDRON WILSONI—This is entirely distinct from the others, having small, compact foliage and short, much branched growth, making it a fine shrub for the rock garden. It produces small sized flowers in great profusion in a lavender-rose color. \$1.50 to 2.50 ea.

RHODODENDRON LUTESCENS—This is a slender, upright growing type with willow-shaped leaves, and bears wide open, light yellow flowers, an unusual color for this group of plants. Only a few available at \$2.50 to \$3.50 each.

RHODODENDRON RACEMOSUM—A very small, leathery leafed shrub with slender, wiry branches, producing in earliest spring masses of small bright pink buds opening into light pink flowers entirely covering the branches. It will prove a delightful evergreen shrub for rock gardens. We have a few nice compact bushes to offer at \$1.25 each.

SKIMMIA JAPONICA—One of the very best of evergreen shrubs, extremely early spring flowering, with small, white, fragrant flower clusters. The foliage is somewhat like that of Daphne but very much more glossy and leathery-like, and the bush grows compact, about two feet high. It does best in shady locations, where it will thrive in the heaviest of soils. The berried form has narrower leaves and smaller flowers, and its berry clusters are of exceptionally brilliant scarlet, even more so than holly berries. In shade where other things fail, this will prove a delight to all. Small size 75c; larger sizes up to \$1.50 each.

OSTEOMELES SCHWERINAE—A truly select shrub with the smallest evergreen foliage of composite type known. This very new, hardy shrub from China thrives in warm sunny spots with little or no watering, and in early summer bears tiny white flowers resembling Hawthorne, followed by edible, currant-like berries, which are used as food in its native regions. A charming, slow growing, small shrub for rock gardens. \$1.00 to \$1.50 each.

GOOD FERTILIZERS ARE THE SECRET OF SUCCESSFUL GARDENS. LET US SUPPLY THEM.

New Trees



THESE are the very compact, slow growing, slender, column-like, dark green bushes, which are so stately for use about homes, and last for generations. They are the supreme pride of all shrubbery, and formerly sold at very high prices only. We now have them in neat sizes from eighteen to thirty inches high, just elegant for gardens of limited space, also invaluable for cemetery plots or formal garden decorations. Priced from \$1.50 to \$3.00 each.

The following sorts are available:

ENGLISH YEWE—A compact growing, rich green form with loosely spreading upright branches bearing bright red berries.

IRISH YEWE—A nearly black green colored foliage with branches tightly folded against the trunk making a slender, solid, attractive column. Extremely slow growing. Often covered with bright red, juicy, sweet berries, showing an exposed black seed in the center which is open.

GOLDEN IRISH YEWE—This is very similar to the preceding, except that it has needles with yellow edges at certain times of the year, and makes then a more pronounced effect than the plain green type. These are true garden treasures and live for many generations without any particular care or attention. They will also thrive in partial shade, which few other evergreens will do.

CHINESE YEWE (*Podocarpus macrophylla*) — Quite similar in habit of growth to the Irish Yew, but the foliage is more substantial and distinct. It is very slow growing also, making it invaluable for small gardens as a tree of distinct and rare appearance. It is not hardy east of the Cascade Range, for none of the Yews can resist weather much below zero.

PEAT MOSS is a most useful soil improver that every gardener should have constantly on hand, for it prevents soil from becoming hard, makes it porous and helps to store fertility and moisture. We can supply you.

Rockery Shrubs



DAPHNE MEZEREUM

DAPHNE MEZEREUM—The most remarkable of its class is this deciduous, slow, upright-growing shrub with neat foliage. It prefers to be grown in shade, under trees, and will then cover its entire stems with deep purplish-rose flowers from January to March. The fragrance of its flowers is unsurpassed by that of any other flowering bush. Not even the orange trees can compare with it. Frost and bad weather seem to encourage its flowers, for they do not appear to mind them a bit, strange to say. This unusually rare and tenacious shrub, so seldom seen in gardens here, is very slow growing but profuse flowering. A limited stock of good flowering size bushes are now ready at \$2.50 each. It prefers a heavy soil.

GENISTA SAGITALIS—This is another of the really choice rockery shrubs, with evergreen, trailing branches of peculiar flat leaf-like form, bearing tiny deciduous leaves and short clusters of bright yellow pea-shaped flowers. This very unusual shrub thrives well in heavy clay soils and sunny dry spots where it will spread over rocks very freely and weave its carpet of bright yellow color during spring. It is very uncommon and attractive the year around, and we feel fortunate to be able to offer this now at 50c each for nice pot-grown specimens, sure to grow.

ONONIS FRUTICOSA—This is one of the rarest of rock garden shrubs known, producing clusters of bright pink, pea-like flowers of unusual charm. It makes a small upright growing bush with narrow serrated foliage, losing its leaves during the winter, thriving well in hot, dry situations in average heavy soils. A real rock garden jewel to be proud of, and perhaps offered now for the first time in this country. Priced at \$1.50 each.

RETINOSPORA PLUMOSA PIGMEA—Tiniest of dwarf evergreens, but little known so far, as it is very rare. It forms a low, feathery mat of blue-green foliage, rarely exceeding a foot in height after many years' growth. Choicest of all miniature conifers now offered in pot-grown specimens at 75c each, limited stock only. Appears to be very hardy and easily grown.

Rockery Plants



ASTER ALPINUS

ASTER ALPINUS—One of the most popular, dwarf rock garden plants, flowering in late spring with great profusion in colors varying from rich deep blue to lavender and rose to white. They thrive in all porous soils and prefer sunny spots. A first class rockery plant, of which we grow a very choice strain. 3 for 85c.



CAMPANULA GARGANICA

CAMPANULA GARGANICA—This is perhaps the finest of the small varieties that will form a carpet between rocks, and produce a sheet of small, star-like, blue flowers with white eyes. Nice, pot-grown specimens, 3 for 65c.

CAMPANULA MURALIS—Another small, very free and long flowering, rockery Bell Flower of great charm for late spring and early summer blooming. 3 for 50c.

CAMPANULA BAVARICA—Very low, neat, tufted plant with deep blue flowers of larger size than preceding. Fine for use in dry walls and fancy rockeries. 3 for 65c.



DIANTHUS ALPINUS

DIANTHUS ALPINUS—A compact-growing plant but two inches high covered with large, single, bright rose flowers flat over the foliage, forming a floral mound during late spring. An ideal rockery beauty too seldom seen, but greatly admired by experts. Needs gritty soil. 3 for 85c.



DIANTHUS SUPERBUS

DIANTHUS SUPERBUS—Very dwarf, compact foliage from which arise masses of short, slender flower stems, bearing during early summer exquisite, lace-like, fringed, spicily fragrant flowers in colors ranging from white to light pink. Easily grown in every rockery. 3 for 65c.

DIANTHUS PANCICII—This is perhaps the most unique of the rockery Pinks with robust, wiry foliage forming a dense clump on the ground, from which arise stout, slender stems twenty-four to thirty inches tall, bearing clusters of small pink flowers. The effect is very grotesque and clownish for a Pink, and a specimen or two are much to be desired in every rock garden. They are extremely hardy and thrive freely. 3 for 85c.

CHOICE AND UNUSUAL PLANTS FOR
FALL AND WINTER PLANTING

DIANTHUS NEGLECTUS—Very dwarf, compact, fine clump of foliage, from which arise short, slender stems bearing several neat, bright pink flowers with a bronze color over the back of the petals. It is considered one of the finest varieties in the Pink family, and a floral treasure in rock gardens. Late spring blooming. 3 for \$1.00.

DIANTHUS SUNDERMANNII—This rare and little known rockery Pink is a unique plant owing to its glistening white flowers with the fragrance of Jasmine. It is a dwarfish grower with compact, thrifty foliage of rich dark green color. Its flowers are waxy in the petals, and single, on short stems. Very choice, yet easily grown. 3 for \$1.00.



DIANTHUS, WHITE MAROON

DIANTHUS, WHITE MAROON—Unusual form of feather pinks of spicy fragrance and lasting flowers with color of deep maroon, nearly black center framed by white edged petals. Easily grown dwarf form of pink for the hardy border or rockery. Makes a splendid, fragrant table flower when cut. 35c each, 3 for \$1.00.



INULA ROYLEANA

INULA ROYLEANA—A truly gorgeous perennial from the Himalayan Mountain region of India that will grow

nicely in our own climate. From a cluster of large, bright green leaves forming a rosette over the ground arises, towards summer, a sturdy stem bearing a large, glossy, brown button, which when opening turns into a sunflower-like blossom. The ray-like petals of bright, rich yellow color have a slender, graceful form of fairy-like charm, however, entirely unlike the sunflowers. The flower stem gradually branches into several buds and flowers in a unique effect. The height of this plant rarely exceeds twenty-four inches. It is one of the noblest hardy plants known today. It requires rich soil and a sunny location. 3 for \$1.00.

NEPETA MUSSINI—This very free growing, grayish-green plant produces mist-like masses of lavender flowers practically throughout the whole summer and will serve well as a border plant or for filling in large spaces in the rockery. 3 for 65c.



PENTSTEMON FRUTICOSUS DWARF GEM

PENTSTEMON FRUTICOSUS DWARF GEM—Truly a beautiful, miniature, evergreen plant forming over the rocks a carpet three inches high of neat, small foliage finer than Boxwood, covered during spring with tubular lavender flowers in great profusion. Its year-around neatness in the rockery makes this novelty very desirable. It wants extremely sandy or rocky, well drained soil, and can stand severe cold without damage. Limited supply. 3 for \$1.00.

PENTSTEMON HETHEROPHYLLUS—This is a taller, midsummer-blooming form, producing long sprays of intense, Gentian-blue flowers in July and August, a time when rockeries need color very much. Sandy, very porous soil is best. 3 for 75c.

PENTSTEMON BARRETTAE—A large, glaucous-leafed evergreen for rockeries, covered with masses of clear lavender to purple flowers in Spring. A truly beautiful but rare plant for sandy, porous soils in full sun. 25c each.

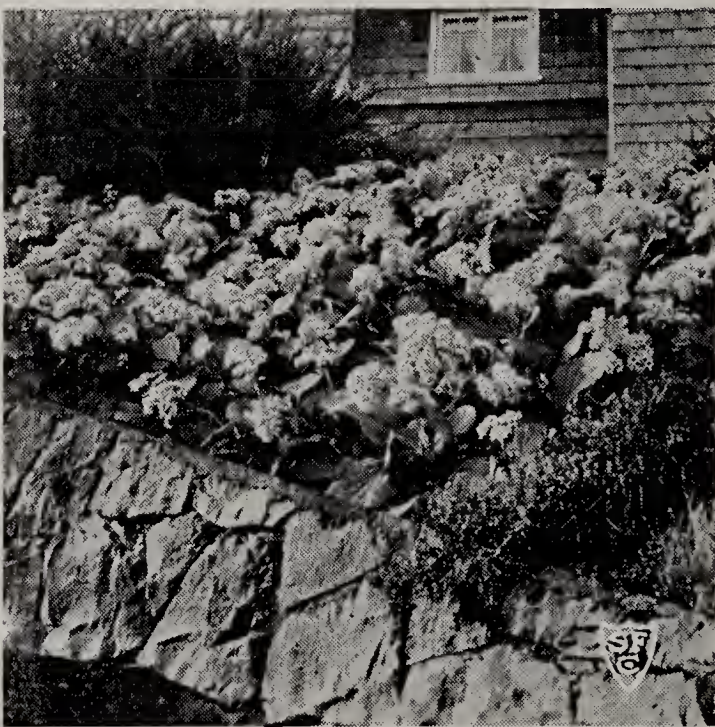
CHOICE AND UNUSUAL PLANTS FOR
FALL AND WINTER PLANTING

PENTSTEMON RUPICOLA—Small, roundish, bluish-green leaves of leathery texture in a compact mass, covering the shortly branched plant. This is a floral gem of outstanding value for the finest rock gardens. Flowers of tubular, two-lipped form in brightest rose color cover the foliage during spring. It creeps like a carpet over rocky crevices, forming small humps of glaucous foliage. This plant enjoys extremely porous, sandy soils, and is deep rooting. Small specimens 25c each.



PHLOX ADSURGENS

PHLOX ADSURGENS—This evergreen creeping Phlox, native of the Siskiyou Mountains, produces during late spring a perfect carpet of beautiful, rich salmon-pink flowers of good size. Its foliage is of a glossy green, neat appearance, and spreads flat over the ground. It needs a loose sandy soil and prefers partial shade in warm regions, but will thrive in full sun if not allowed to dry out too much. 3 for 85c.



SAXIFRAGA CORDIFOLIA

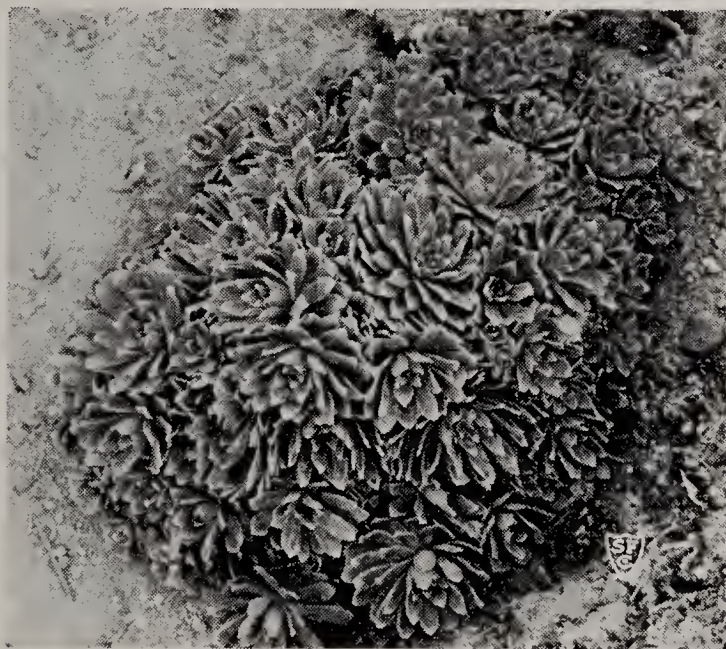
SAXIFRAGA CORDIFOLIA—Large leathery leaves with bright pink flowers during earliest spring. Will grow in sun or shade. Fine for rockeries and shady borders. Slow but permanent growth. 3 for 85c.

SILENE SCHAFTA—Among rock plants few are more profuse flowering than this popular, late summer kind, that weaves a carpet of bright rose over its foliage. Easily grown and very lasting. 3 for 65c.



SYNTHYRIS RENIFORME

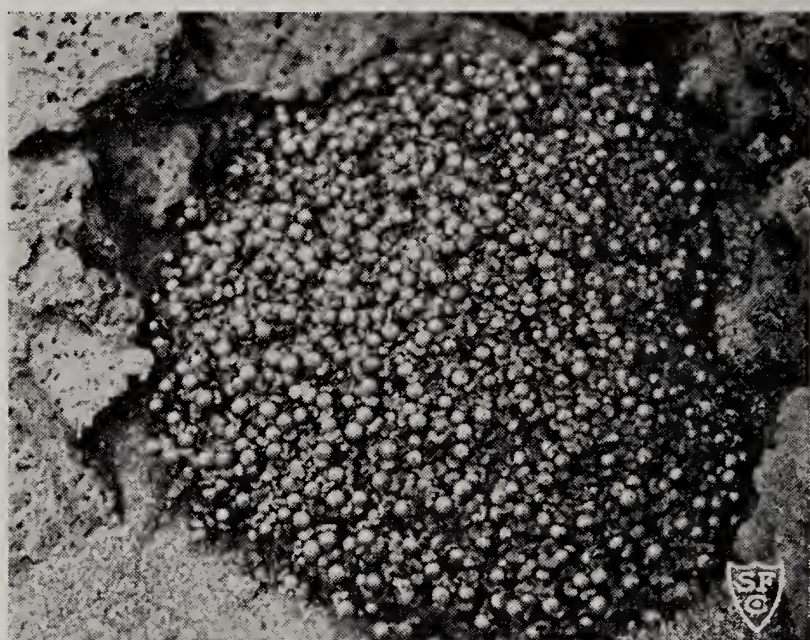
SYNTHYRIS RENIFORME—A plant resembling a dwarf Heucherea in foliage and habit of growth, with dark green, glossy, neat foliage in a compact cluster, from which arise short stems bearing dainty, rich blue flowers of great beauty in the earliest days of spring. It prefers a shady location, and is a very hardy and robust dwarf rockery plant. In our opinion it is the loveliest early spring blue flower, yet but little known. 3 for 85c.



SAXIFRAGA CRUSTATA

SAXIFRAGA CRUSTATA—Very interesting low growing rock plants with handsome rosette-like foliage that has a white marking on the edges appearing like hoarfrost from the distance. Neat and showy yet easily grown, preferring shelter from the hot sun. 15c per clump.

GOOD FERTILIZERS ARE THE SECRET OF SUCCESSFUL GARDENS. LET US SUPPLY THEM.



NERTERA DEPRESSA, OR CORAL BEAD PLANT

NERTERA DEPRESSA, or CORAL BEAD PLANT—This exceedingly rare, unusual rockery plant for mild climates creates a sensation by its mass of coral red, bead-like berries produced on a dense carpet of foliage which is rarely over one inch high. It requires a rich soil in a damp situation where it will be sheltered from the hot sun, as it grows moss-like over the ground. In severe climatic regions it must be taken in the greenhouse over winter as it can only resist a few degrees of cold. This high mountain bog plant is perhaps the choicest of beautiful rockery plants offered in the miniature class. Fine three-inch pot grown berried specimens at 50c.

Perennials

AQUILEGIA OR COLUMBINES—Long spurred hybrids, mixed colors. Fine for hardy borders and as cut flowers. Excellent strain of superb colors. 6 for \$1.10; \$2.00 per dozen.

AQUILEGIA GLANDULOSA JUCUNDA—A dwarf type with large blue flowers with white centers. Unusually choice and rare. 3 for \$1.00.

AQUILEGIA HENSOL HAREBELL—Latest introduction from England with exceptionally fine violet-blue flowers and growth of medium height. Promises to become very popular in all gardens. 3 for 85c.

COONARA POPPY—An Australian introduction of soft, salmon-pink colored, Iceland Poppy. A very pleasing, easily grown plant for rockeries or hardy borders. It is a profusely flowering plant for cut flower purposes as well. 6 for 85c.

DELPHINIUMS—Hybrids, Blackmore and Langdon Strain, stately varieties in a rich mixture of colors that make an interesting assortment in the hardy border. 6 for \$1.10.

GAILLARDIA THE DAZZLER—A great companion flower for cutting purposes to the preceding, as it produces a most profuse supply of large coppery, orange-

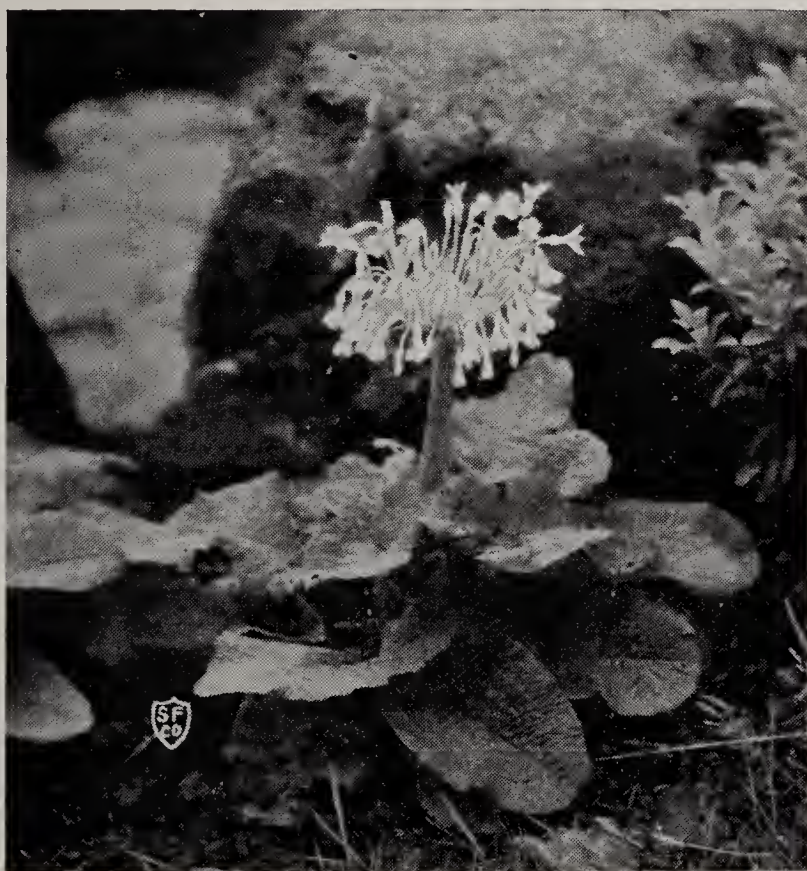
yellow flowers all through the summer, and is easy to grow. Full sun required. 6 for \$1.10.

LUPINS—Hybrids, in many assorted colors are grand for hardy borders, thrive freely, and serve well for cutting. Colors range from bright rose to lavender and purple. 6 for \$1.10.

PRIMULA VERIS—The common garden Primrose in richly assorted colors, useful for rockery, for shrubby borders, or amongst hardy plants. \$2.00 per dozen.

PRIMULA AURICULA—The mountain Primrose with glossy, smooth leaves and very richly colored flowers, often fragrant. Extremely hardy, splendid for rockery use. 3 for 65c.

PRIMULA DENTICULATA—A large rather long leaved form of the Orient flowering very early in spring with ball shaped clusters of closely crowded small lavender to purple flowers. A very hardy easily grown plant that loves a deep rich soil in partial shade. Now 3 for 85c Six for \$1.60.



PRIMULA FLORINDAE

PRIMULA FLORINDAE—Large-growing plant for shady spots, with tall flower stems bearing clusters of bright yellow, deliciously fragrant flowers during mid-summer months. Very hardy. Rare. 3 for 75c.

PRIMULA JULIAE—Rare, dwarf-growing, forming a carpet of neat foliage studded with bright, crimson-purple flowers with yellow eyes. One of the choicest forms for shady locations. 50c each.

PRIMULA LITTONIANA—Unusual type of Primula with long spike of lavender flower and scarlet buds, resembling somewhat the Poker Plant. A most interesting but rare form now available in a small quantity at 35c ea.

FINE SAND is a gardeners friend at all time and has so many uses that a supply should always be handy; its cost is low and we can supply it in any quantity within the city limits.

CHOICE AND UNUSUAL PLANTS FOR
FALL AND WINTER PLANTING



PRIMULA ROSEA

PRIMULA ROSEA—Very early flowering, of brightest pink color, a floral gem in the true sense. Fine for the shady rockery, and rich soil. 3 for \$1.00.

PRIMULA DENTICULATA—Rather large foliage with very early flowering habit. Blooms in roundish clusters, of lavender shades, on thrifty stems. Good rockery sort, very hardy. 25c each.

Limited quantities of the following sorts are also grown: *Primula bullesiana*, *P. pulverulenta*, *P. burmanica*, *P. luteola*, etc.

SCABIOSA CAUCASICA—This perennial, sweet Scabiosa with its delightful blue flowers on long wiry stems is of unexcelled merit as a table and garden flower. It blooms continuously and is easily grown, but slow to start, however. Hardy everywhere. 3 for 85c.



STATICE DUMOSA

STATICE DUMOSA—A new, dwarf-growing perennial fit for rockery purposes and excellent for cutting. It blooms profusely in a silvery rose color, and the flower sprays may be dried as everlastings. 3 for 85c.

THALICTRUM DIPTEROCARPUM—One of the most charming of hardy plants for cut flower purposes, producing slender sprays of Babybreath-like, blue flowers with yellow anthers, with foliage like Maidenhair Fern to some extent. No perennial border should be without this flower. Rich soil required. 6 for \$1.25.

Bulbs

ALLIUM PULCHRUM—This is a rather rare and seldom seen tiny bulb for the rockery, where its foot-high clusters of charming lavender-pink blossoms in late summer prove a delightful surprise because of their elegance and long lasting quality. 6 for 50c.

ALLIUM LUTEUM— A fine companion to the preceding as it flowers similarly and at the same time, but comes in a bright yellow color. The bulbs are very small but hardy everywhere. 6 for 50c.

ALLIUM CUPANI—This is a pure white, earlier flowering form, that is exceedingly neat in its tiny star-like flowers which are produced in small umbels late in spring. Excellent for use in the rockery as features of special interest. 6 for 50c.



CALOCHORTUS VESTA

CALOCHORTUS VESTA—The so-called Mariposa Tulip, a real floral wonder among bulbs for the rockery. It flowers during early summer, and produces large, three petaled blooms resembling Tulips but bearing at the base of each cream colored petal a marvelous brownish blotch and fine, symmetrical, hair-like designs in bronzy color which are delightful to behold. The flower stems are eighteen to twenty-four inches tall, often bearing from three to eight flowers, each three to four inches in diameter. The very small bulbs need a substantial, rich, but porous soil in sunny situations. Butterfly Tulips is their popular name. 4 for 50c. 12 for \$1.25.

¶ Suggestions for garden improvements, planting ideas, construction of lily pools, rockeries, etc. will be furnished our patrons within a reasonable area or distance of our establishment. 35 years of experience is back of our service to customers.

CHOICE AND UNUSUAL PLANTS FOR
FALL AND WINTER PLANTING

REGAL LILY—Truly the Queen of all garden lilies, and unsurpassed as a cut flower. Easily grown in all gardens and exposures. Fine flowering bulbs from 15c to 25c each.

SIBERIAN CORAL LILY—One of the most brilliant orange-red lilies, especially adapted to rock garden planting, as it has a fine slender growth with very graceful foliage, and flowers early. Best by grouping several bulbs into a cluster. Strong flowering bulbs, six for \$1.00.

LILIUM ELEGANS—This is also of low growing type with large cup-shaped upright flowers in richest orange to crimson shades; also yellow forms. Fine as clusters between low growing shrubs. Early summer flowering. Bulbs three for 75c.



TIGRIDIAS, OR MEXICAN LILY

TIGRIDIAS, or MEXICAN LILY—The strange brilliance and form of this summer flowering bulb is irresistible in its appeal to the eye and sense of man-kind. The queer fact of its flowers lasting but one day, yet flowering all summer in great profusion, makes this a desirable bulb for all gardens.

They grow readily in all rich garden soils in full sunshine and want generous watering while flowering. Best time to plant them is during spring after heavy frosts are over.

As bulbs are rather rare it is best to place your orders long in advance to insure satisfactory quality and the varieties desired.

We are able to offer the following sorts:

Brilliant scarlet	per doz.	\$1.00
Bright yellow	per doz.	1.00
Orange yellow	per doz.	1.50
Deep rose	per doz.	2.00
Blush pink	per doz.	2.50

Best method of planting is in clusters of 3 to 5 bulbs, 3 inches deep. Keep bulbs frost-free during winter months.

Vines

CLEMATIS, LARGE FLOWERED HYBRIDS—Raised from seed these come in a variety of colors from pink to lavender and purple hues, usually with very large flowers, during late spring or summer. Very hardy, preferring partial shade and rich soil for best results. 35c each.

CLEMATIS MONTANA RUBENS—A free-growing vine for sun or shade, that is covered with little star-shaped flowers, shading from pink to white, just before the leaves unfold in spring. Truly handsome and very hardy. 75c each.



PASSIFLORA COERULEA, OR PASSION VINE

PASSIFLORA COERULEA, OR PASSION VINE—Beautiful flowering vine for mild climate, grows freely in warm, sheltered places in Portland and other coast cities. Flowers during midsummer and fall. 75c each.

Miscellaneous

FORGET-ME-NOTS—This popular blue border plant deserves to be used in every garden, for it makes lovely effects by itself, is fine for the rockery, is an ideal combination with Wallflowers of all sorts, and for window box planting it will prove simply superb. Fall and winter planting is best. 60c per dozen.

Pansies

PANSIES of the super-improved types are truly a revelation in the marvelous new colors and large sized blossoms, and when properly planted a Pansy border is the outstanding feature in any garden month after month, far out-shining all other plantings. They like a loose, very rich, mellow soil in full sun, and those planted in the fall will make a most beautiful early flowering display in the spring days, far superior to those set out in spring. As they are hardy, there is no need of covering them during cold weather, unless ex-

CHOICE AND UNUSUAL PLANTS FOR FALL AND WINTER PLANTING

ceptional freezing spells should occur without any snow covering in which case peat moss, straw, or hay will serve well as a covering. Yet it is rarely ever needed in our region here. We are offering the following choicest known kinds which will bring results of truly satisfying quality to all flower fanciers.

PANSY ALPGLOW—Reddish-bronze color with large sized flowers, greatly admired and popular sort. 50c per dozen.

PANSY LAKE OF THOUN—Another of the famous Swiss Pansies of deepest, intense blue color with darker center. Has won world-wide fame for its beauty. Marvelous for borders and beds. 50c per dozen.

PANSY PURE GOLD—Richest clear yellow of a purity and brilliance unsurpassed, and for bold color effects this variety is invaluable. 50c per dozen.

PANSY ROGGLI'S GIANT MIXED—Today's best known and finest mixed Pansies, originated a few years ago in Switzerland, and used in gardens throughout the world because of their unexcelled size and color range. 50c per dozen.

Violas

VIOLA, JERSEY JEWEL—A rich purple, profuse flowering variety now in great popularity for borders and mass planting, also for rockery use, grown from our own selected seed. Fall delivery only at 75c per dozen, \$4.50 per 100.



APRICOT VIOLA MAROON BEAUTY

VIOLA APRICOT MAROON BEAUTY—Deep, rich, apricot yellow with intense maroon colored eye of appealing charm. This is a special sort of our own selection, and is greatly admired wherever grown. Well adapted to border use and rock garden planting. 60c per dozen, \$4.00 per 100. Fall orders only.

VIOLA BOSNIACA—One of the surprising, unusual forms of rockery Violas with bright rose colored flowers, very free, profuse, but low growing type, unexcelled for the better rockeries. 3 for 50c.

Wallflowers

THEY are not novelties, or rare; yet, good quality plants in choice varieties are not frequently available, and from experience we know that they give a more colorful display than most other spring flowers and last longer in bloom, besides being delightfully fragrant. They are truly choice and the pride of the finest gardens in beds or borders and for window box planting, as there the evergreen foliage is a welcome feature during the winter months. Plant them ten inches apart, or twelve to fourteen inches in borders for best results, in sunny locations only. They have proven very hardy for many years.

WALLFLOWERS, DWARF MIXED, TOM THUMB—The dwarf, low-growing type in many rich colors, especially adapted for border purposes, and also ideal plants for filling in the rockery, where they are well at home and often last for many years. 75c per dozen.

WALLFLOWERS SINGLE, FINEST MIXED—The most colorful mixture of strains imported from abroad, containing many novel shades not known or seen in earlier gardens, and therefore bringing forth delightful surprises when they come into bloom in April. As window box plants they are unsurpassed in the coast climate. 75c per dozen.

WALLFLOWERS RED GOLIATH—An outstanding, large flowering type, in the richest brownish-red color known. As a fragrant cut flower this variety is perhaps the best and most popular of them all. \$1.00 per dozen.

WALLFLOWERS SIBERIAN—Very delightful orange-yellow flowering sort much appreciated in rockeries but also fine for border use, and used in combination with Forget-me-nots the beauty of the effect produced is unsurpassed. If seeds are not allowed to form on the plants, they will bloom for several months in succession. \$1.00 per dozen. (Limited stock only of fine, pot-grown plants)

NOTE—All shipments will be sent by Express unless required postage is included with remittance for orders.

¶ Customary clause of non-warranty applies to all stock listed in this folder.

¶ Our special Book of Better Shrubs and Plants will be sent to customers with orders from this folder if request is made for same.

Swiss Floral Co.

North East Seventh Avenue and Hancock Street
TRinity 9865

PORTLAND, OREGON

Nursery: South East 28th Avenue and Holgate Street

CREATING and tending a garden will prove a noble pastime and hobby, one that endears itself to soul and body, and repays efforts made with better health and prolonged life. Indulge in Nature's glory, and let your garden become a shrine in which you can spend your happiest hours, with peace of mind your attainment.

